

Closed Captioning on Tablets at Ed Fringe Setup



Tablet Captioning Equipment includes:

Operating lap-top with SopraText Captioning and Script Formatter software, 8 x 7" Android Tablets with Sopratext apk, 10 Tablet charging station, 4-way extension lead, small-flight case.





DHCP Router

A router of this size will be sufficient for most small to medium size venues, subject to local conditions. If your venue has a WiFi facility then you can use that as an alternative – do not power up the supplied router but follow the instructions to connect the operating laptop and the tablets to your in-house WiFi.

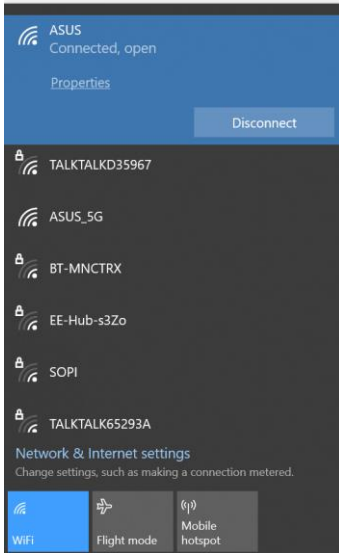
We are outputting locally so no internet access is required for the system to work.

Test the system in your venue before your shows and find the optimum position for your router. Connect everything together and output to the tablets in different locations in the theatre.

Connecting things together- router, operating lap-top and tablets.

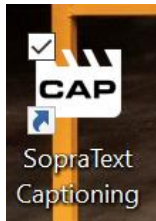
- Plug-in the router, turn it on and wait a few minutes for it to fully initialize.
- Connect the power supply to the laptop and turn it on.

- Check that your laptop is connected to the router – connect the laptop to ASUS - no password is required.



Opening the software :

- Open SopraText Captioning by clicking on the CAP icon on your laptop.

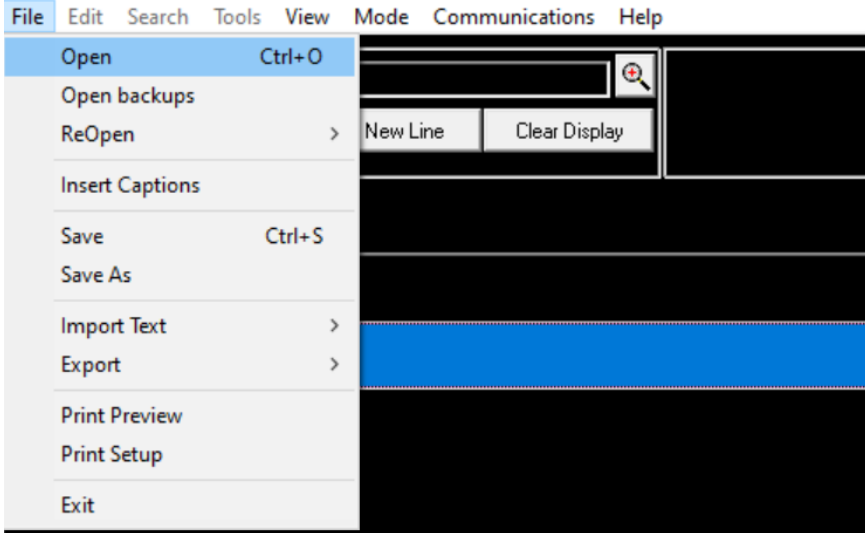


- to Edit Mode via the Menu Bar or clicking in the Show / Edit Mode Box

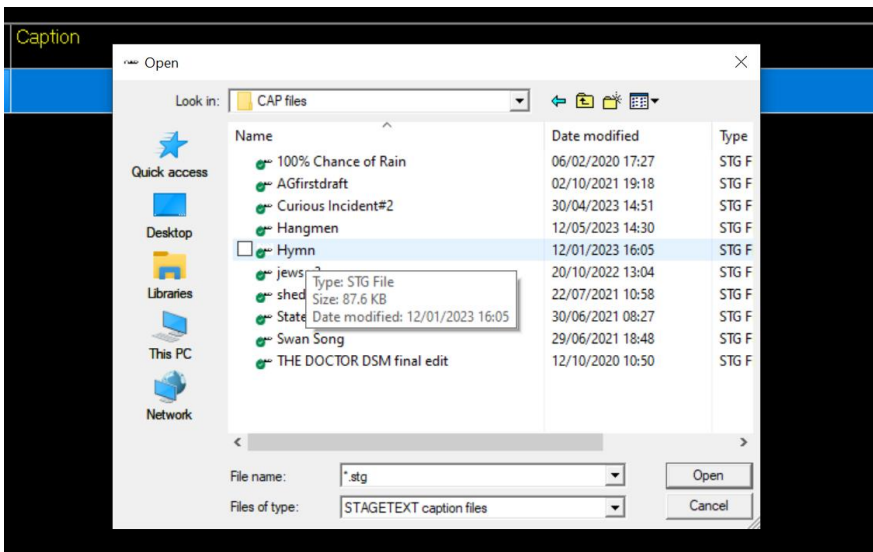


- Go to File > Open (or File > Re-Open) and select a CAP file.

SopraText Captioning



- Highlight your CAP file and click Open.



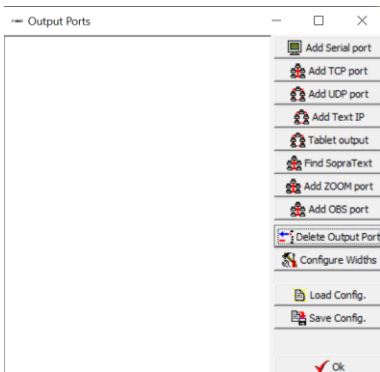
- CAP file in Edit Mode

Line	CUE	Justification	Bright	Speed	Timing	Caption
1						CO:
2		Left	100	42	S	
3		Centre	100	42		This evening's performance of
4		Centre	100	42		Hangmen
5		Centre	100	42		is captioned by Digital 4
6						CO:
7		Left	100	42		
8		Left	100	42		
9						CO:
10		Centre	100	42		More information on events with captions
11		Centre	100	42		or live subtitles can be
12		Centre	100	42		found at www.digital-4.co.uk
13						CO:
14		Left	100	42		
15		Centre	100	42		BELL CHIMES
16						CO:
17		Left	100	42		
18		Left	100	42		HENNESSY: Oh, you punctual astards!
19		Left	100	42		HARRY: It'll all go easier for ya, lad,
20		Left	100	42		if you just accept it
21		Left	100	42		and don't make a fuss.

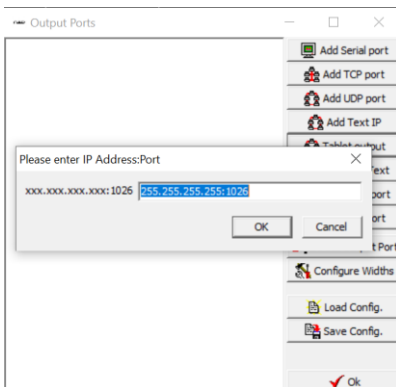
- CAP file in SHOW MODE

Line	Timing	Caption
1		CO:
2	S	
3		This evening's performance of
4		Hangmen
5		is captioned by Digital 4
6		CO:
7		
8		
9		CO:
10		More information on events with captions
11		or live subtitles can be
12		found at www.digital-4.co.uk
13		CO:
14		
15		BELL CHIMES
16		CO:
17		
18		HENNESSY: Oh, you punctual astards!
19		HARRY: It'll all go easier for ya, lad,
20		if you just accept it
21		and don't make a fuss.

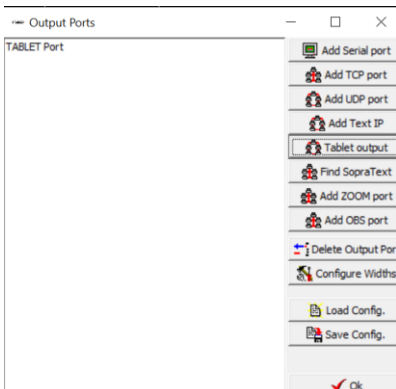
- Go to Edit Mode > Communications > Edit Output Ports.



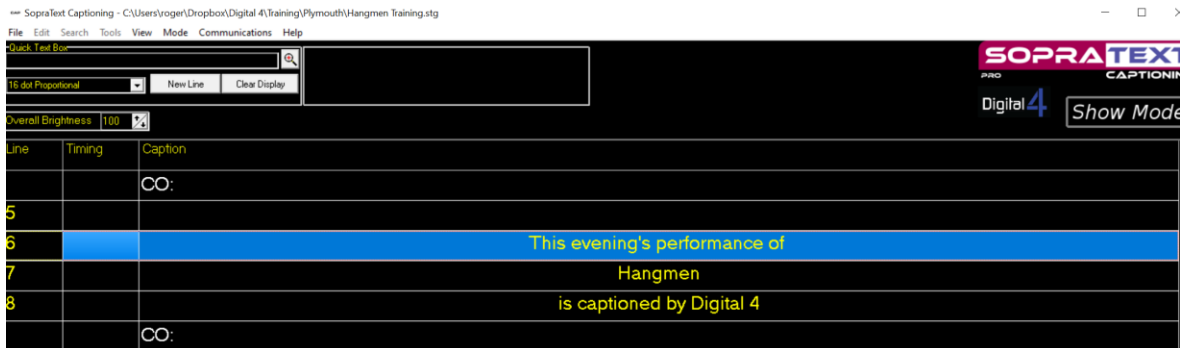
- Click on Tablet output This box will appear, click on OK.



- A new window will appear showing TABLET Port in the top left corner. Click Ok.

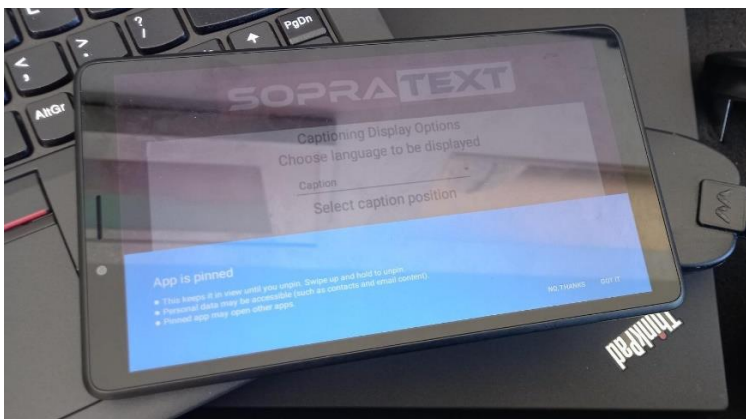


- RETURN TO SHOW MODE
- Select a cue by clicking on a line.

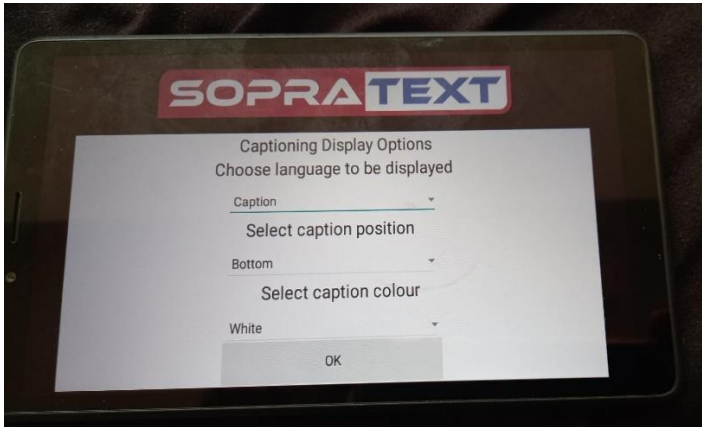


OPENING YOUR TABLETS AND CONNECTING TO THE WIFI.

- Turn on the tablets – push in the lower of the buttons on the right hand side of the screen as you look at it.
- Swipe up to view the apps.
- Go to Settings > Network and Internet > WLAN and check that the tablet is also connected to ASUS. It will show as “ASUS No internet”
- Return to the main screen and open the Sopratext apk

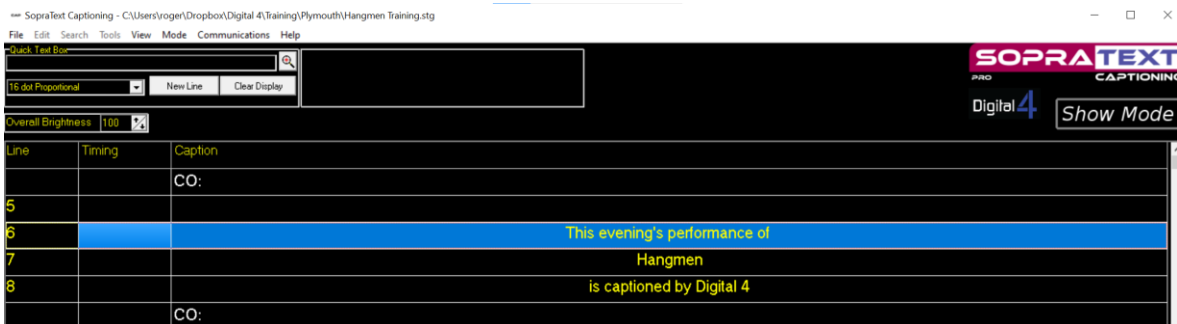


- Click “Got it” to pin the app open – this makes it more difficult for clients to accidentally exit the app during the show.

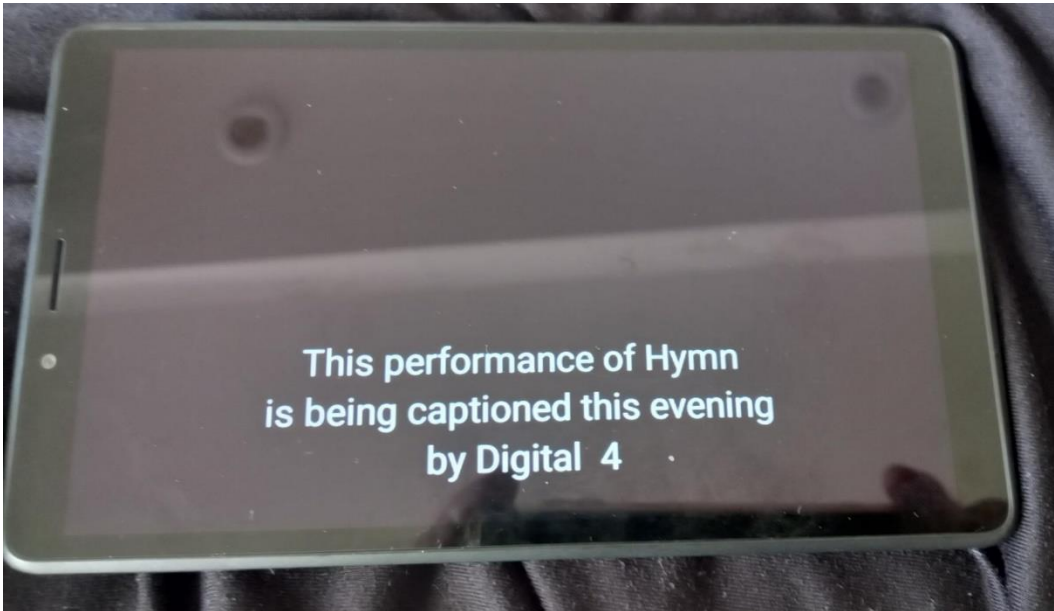


- Select where in the screen you want the text. Select caption colour. Click OK.

GO TO SHOW MODE ON THE OPERATING LAPTOP AND OUTPUT



- The blue line highlights the next cue that will be output. You can run up and down cues without outputting by using the up and down chevrons on the keyboard.
- To output the line press > (right arrow) or S for send
- C will clear the screen with the text scrolling up
- B will blank the screen



OUTPUTTING TIPS

- Output the lines so that the bottom line appears as the actor speaks that line. The 2 lines above act as context so that meaning is clear. Find your own rhythm but begin by outputting as soon as the actor begins the line.
- Do not leave lines “hanging” on-screen long after the line has been spoken. Either use C for clear, or add 3 blank lines after pauses where there are pauses.

CONTACT DETAILS:

info@digital-4.co.uk

www.digital-4.co.uk

Roger Beaumont

07949 124399