

Output text to LCD Displays, Projectors and Vision-Mixers using “CAP” LCD Captioning from Sopratext.

Please check that your operating PC/ lap-top has an HDMI output. Use an HDMI cable connect to your LCD Display, Projector, Vision-Mixer etc.

Open the SopraText LCD Captioning App by clicking on the Icon on your PC/laptop:



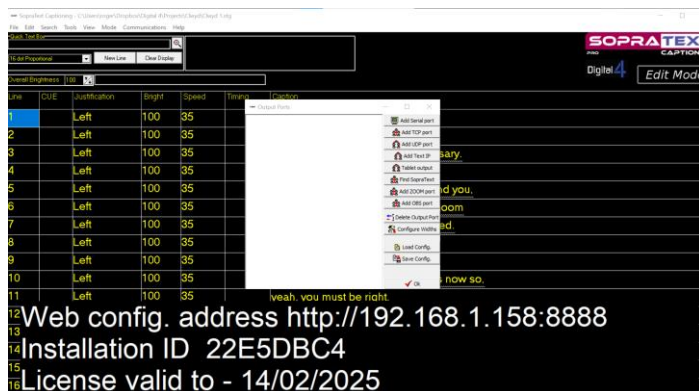
This LCD / HDMI output “letterbox” will appear on screen. This is where you captions will appear when you output.

**Web config. address <http://192.168.1.158:8888>
 Installation ID 22E5DBC4
 License valid to - 14/02/2025**

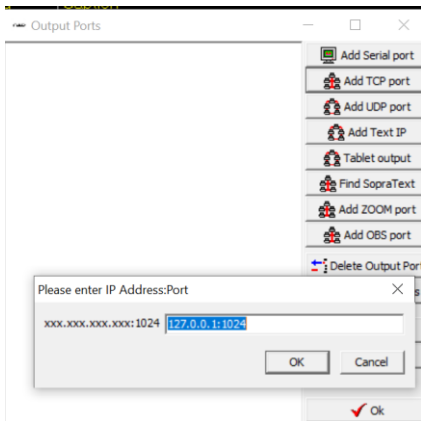
In the letterbox you will see:

- 1) The Web config. address – **please make a note as you may need this later if you want to change the colour, point-size, and the number of lines you are displaying.**
- 2) The installation ID number – if your licence has run out you can email this number to info@digital4.co.uk and we can update your licence.
- 3) The Licence expiry date.

Open SopraText Captioning / Edit Mode and open your CAP or stg file. Then open Edit Output Port.

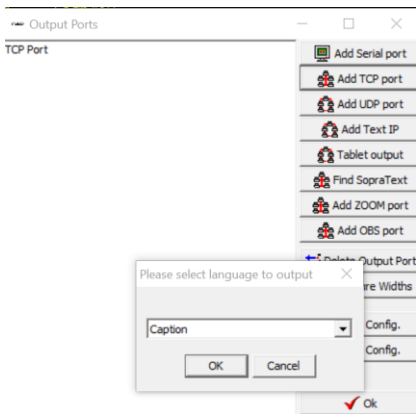


Choose Add TCP port and then click OK in the “Please enter IP Address Port window”.

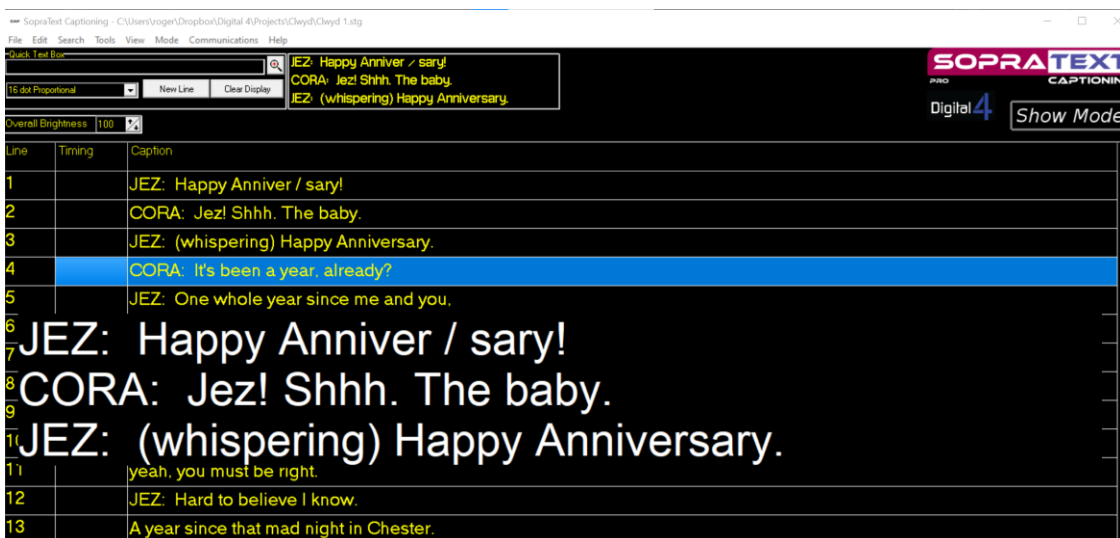


“TCP Port” will appear top left in the Output Ports Window and the “Please select language to output” window will appear.

Select Caption and click Ok.



Go to Show Mode and select a cue and output. Your captions will appear the output “letterbox”.



Connecting the HDMI output to your display device:

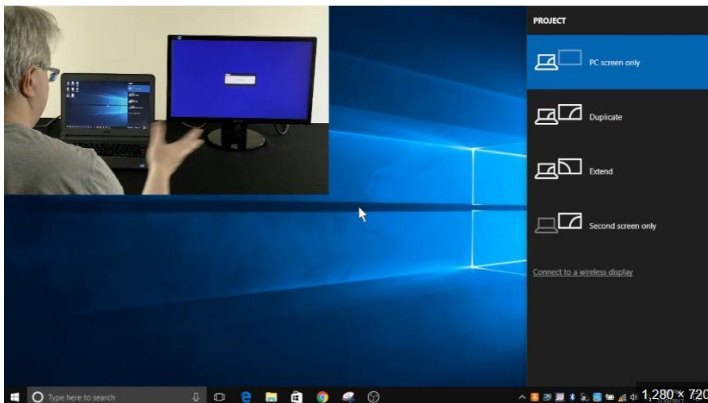
Connect your laptop to your display device using an HDMI cable. Depending on the number of devices you are connecting to and their location you may need to use splitters and extenders.

If your laptop does not have an HDMI port, you may be able to use an adapter from a mini-Display Port or USB-C port.

On your laptop:

1. Select Start > Settings > System > Display. ...
2. In the Multiple displays section, select “Extend Screens” from the list to determine how your desktop will display across your screens.
3. Once you've selected what you see on your displays, select Keep changes.

Alternatively, use the shortcut Windows Key + P and select Extend.



Projected Captions



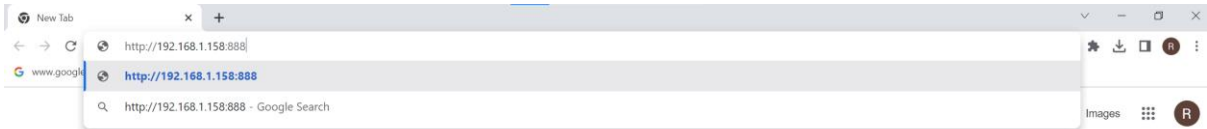
Captions on LCD Display



Captions on an LED panel "Video Wall"

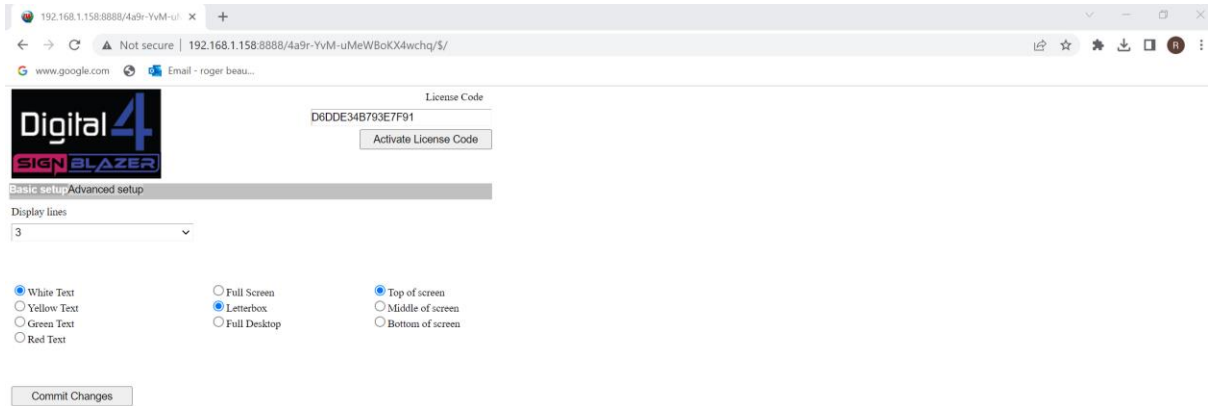
How to re-configure the text output to your "letter-box".

To change the number of lines, the colour of the text, the font, or pint-size of the text in your letter-box enter the web-config address shown in the letter-box when it first appeared into your browser:



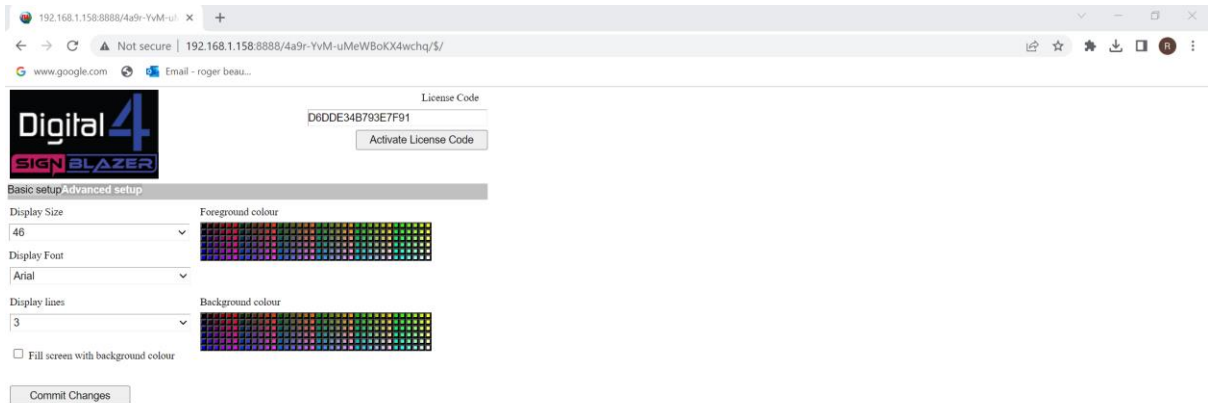
Web config. address <http://192.168.1.158:8888>
Installation ID 22E5DBC4
License valid to - 14/02/2025

This page allowing to make Basic Edits will appear.



Web config. address `http://192.168.1.158:8888`
Installation ID `22E5DBC4`
License valid to - `14/02/2025`

For more advanced editing select the Advance set up option:



Web config. address `http://192.168.1.158:8888`
Installation ID `22E5DBC4`
License valid to - `14/02/2025`